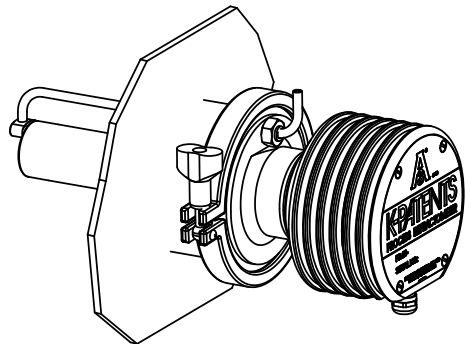
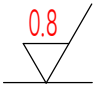
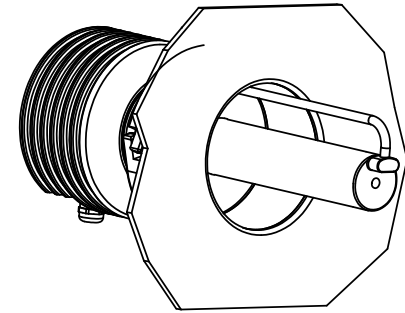
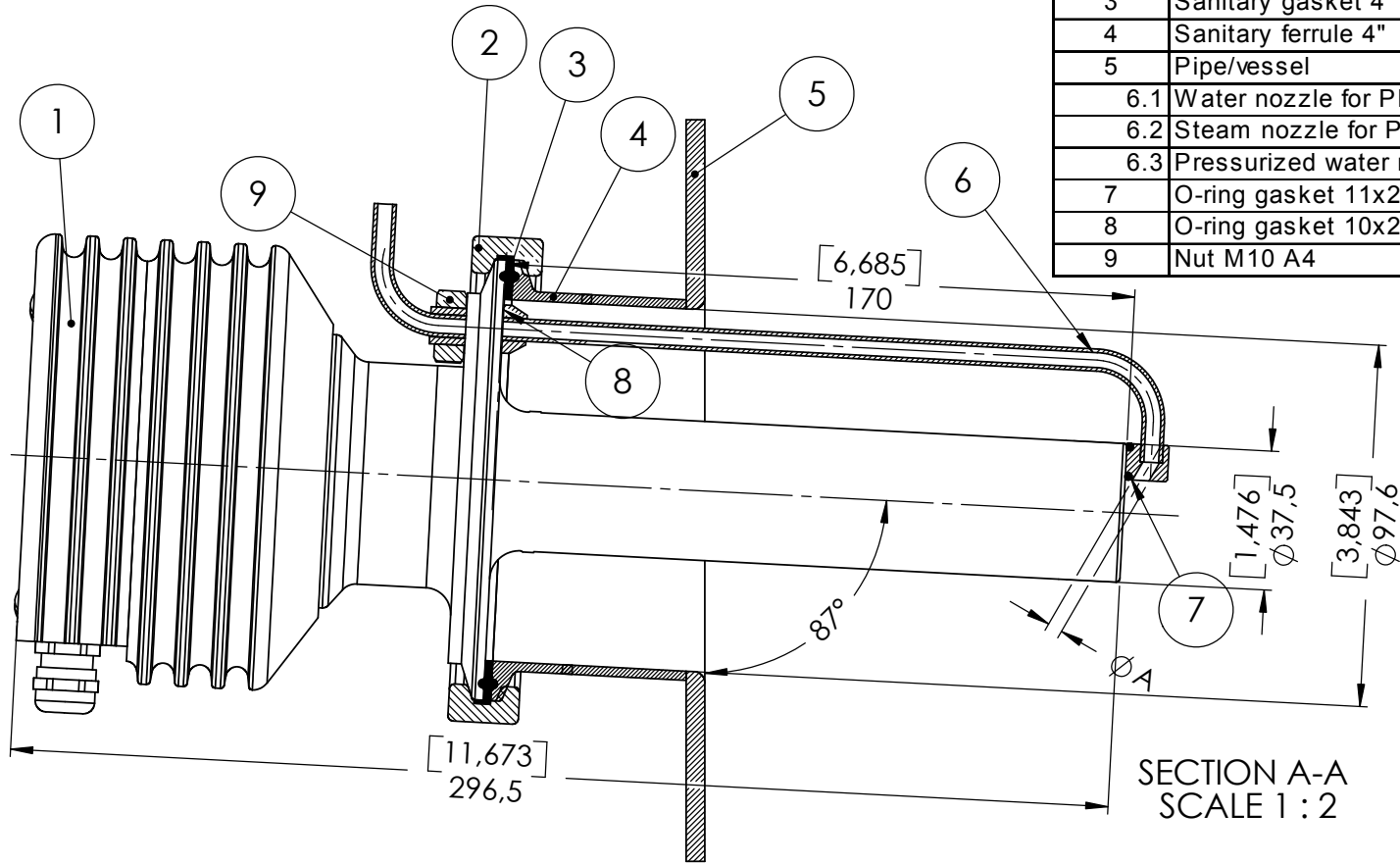


Nozzle	A
Water nozzle for PR-23-AP	2.5 [0.098]
Steam nozzle for PR-23-AP	4 [0.157]
Pressurized water nozzle for PR-23-AP	1.5 [0.059]

Mark	Rev.	Date	Rev. by	Appr.
A	Gasket size corrected	11.8.05	HS	HS

Item no.	Name	Material	Supplied by	Pcs.
1	Sensor PR-23-AP-RSS-NC		K-Patents	1
2	Sanitary clamp 4"	AIS304	K-Patents	1
3	Sanitary gasket 4"	Kalrez	K-Patents	1
4	Sanitary ferrule 4"		K-Patents	1
5	Pipe/vessel	AISI316L	Customer	1
6.1	Water nozzle for PR-23-AP	AISI316L	K-Patents	1
6.2	Steam nozzle for PR-23-AP	AISI316L	K-Patents	1
6.3	Pressurized water nozzle for PR-23-AP	AISI316L	K-Patents	1
7	O-ring gasket 11x2	EPDM	K-Patents	1
8	O-ring gasket 10x2.5	EPDM	K-Patents	1
9	Nut M10 A4	AISI316L	K-Patents	1



Part no.	Drawing no.	Title/Name, designation	Standard	Dimensions, model no.	Quantity
----------	-------------	-------------------------	----------	-----------------------	----------

General tolerances SFS 4011 FINE	Scale 1 : 2	Join MRP0000	File MTG444.drw		
-------------------------------------	----------------	-----------------	--------------------	--	--

K-PATENTS
PROCESS INSTRUMENTS

Drawing description
Mounting drawing PR-23-AP-RSS-NC

Drawing number MTG444/A	Drawn 28.2.2005 HS
	Appr. 28.2.2005 HS