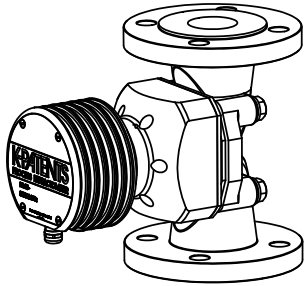
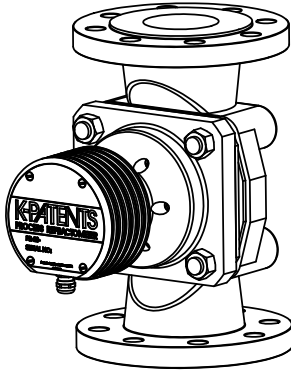


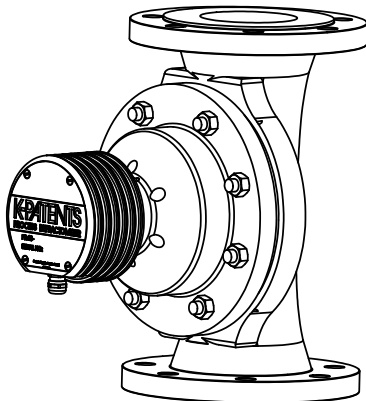
Mark	Rev.	Date	Rev. by	Appr.



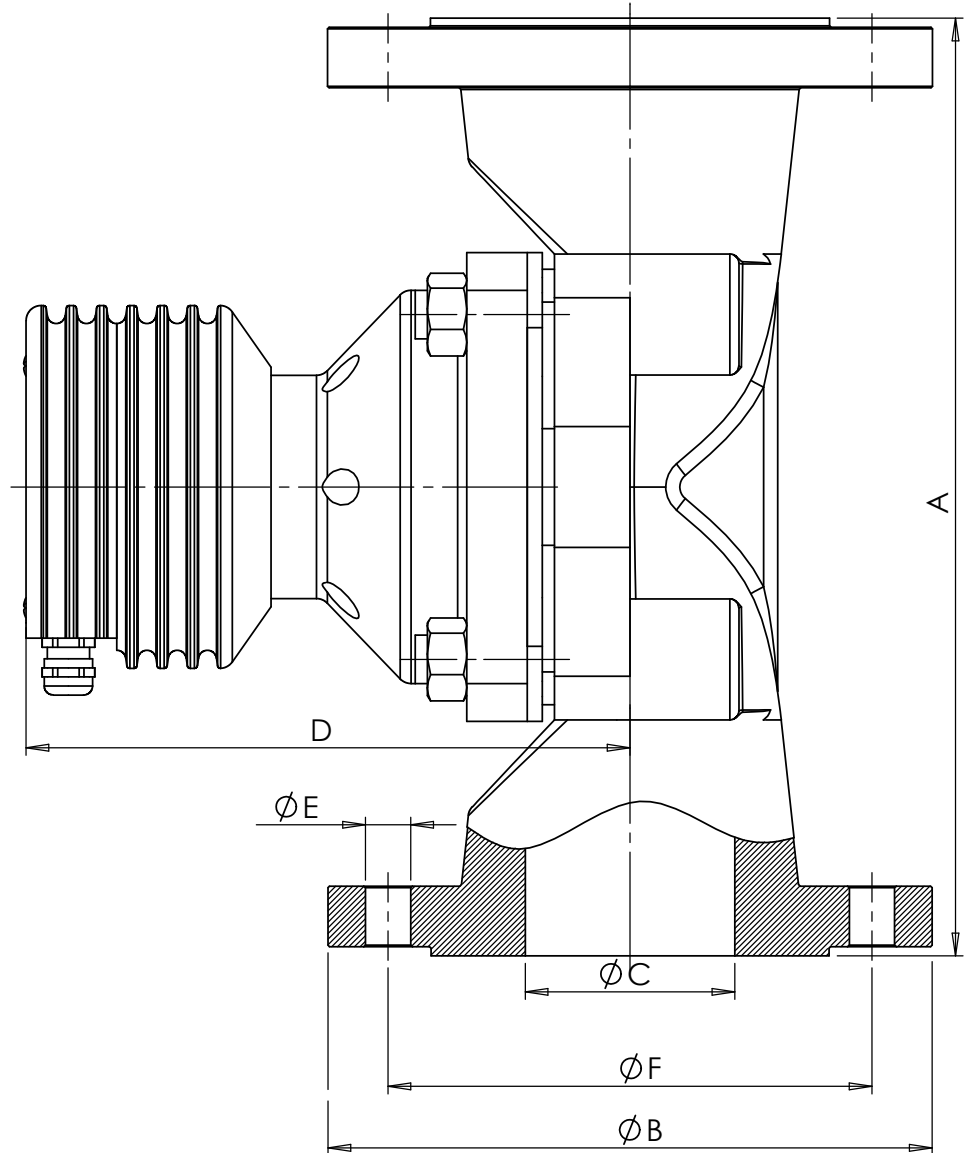
PR-23-W with SVB-D050



PR-23-W with SVB-D080



PR-23-W with SVB-D100



Saunders valve body	Flange size	A	B	C	D	E	F
SVB-A020	ANSI 2" 150psi	196 [7.72]	152.4 [6]	47 [1.85]	189 [7.40]	19.1 [0.75]	120.7 [4.75]
SVB-D050	DN50 10bar	230 [9.06]	165 [6.50]	50 [1.97]	189 [7.40]	18 [0.71]	125 [4.92]
SVB-A030	ANSI 3" 150psi	260 [10.24]	190.5 [7.5]	78 [3.07]	205 [8.07]	19.1 [0.75]	152.4 [6]
SVB-D080	DN80 10bar	310 [12.2]	200 [7.87]	80 [3.15]	205 [8.07]	18 [0.71]	160 [6.30]
SVB-A040	ANSI 4" 150psi	311 [12.24]	228.6 [9]	92 [3.62]	256 [10.08]	19.1 [0.75]	190.5 [7.5]
SVB-D100	DN100 10bar	350 [13.78]	220 [8.66]	100 [3.94]	256 [10.08]	18 [0.71]	180 [7.09]

Part no. | Drawing no. | Title/Name, designation | Standard | Dimensions, model no. | Quantity

General tolerances: SFS 4011 FINE | Scale: 2 : 5 | Join: MRP0000 | File: DIM450.DWG |

Drawing description: Dimensional drawing PR-23-W with SVB

Drawing number: DIM450

Drawn: 12.11.04 HS

Appr.: 12.11.04 HS

**K-PATENTS**  
PROCESS INSTRUMENTS